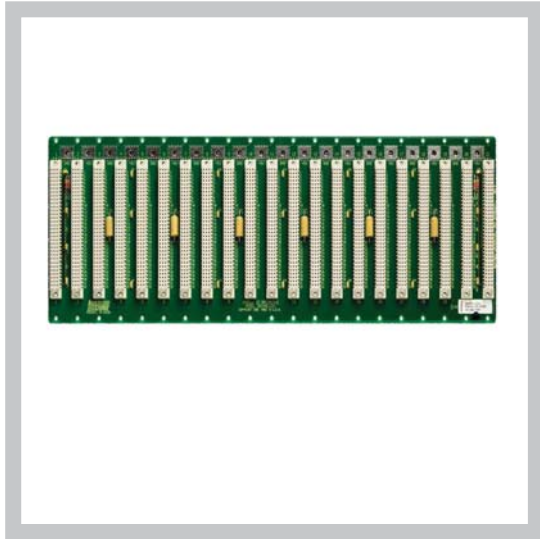


## J2, J3 DEVELOPMENT BACKPLANE



### FEATURES

- All J2 B row power and ground pins connected per ANSI/VITA 1-1994 and IEEE P1014 specifications. All other J2 pins user definable
- All J3 A+C row power and ground pins connected per ANSI/VITA 1-1994 and IEEE P1014 specifications. All other J3 pins user definable

### BOARD SPECIFICATIONS

- 2-layer stripline design
- 2 oz. copper power and ground
- PCB UL recognized 94V-0
- PCB FR-4 or equivalent
- PCB .125" thick

### MECHANICAL SPECIFICATIONS

- 3U height
- 2-21 Slots

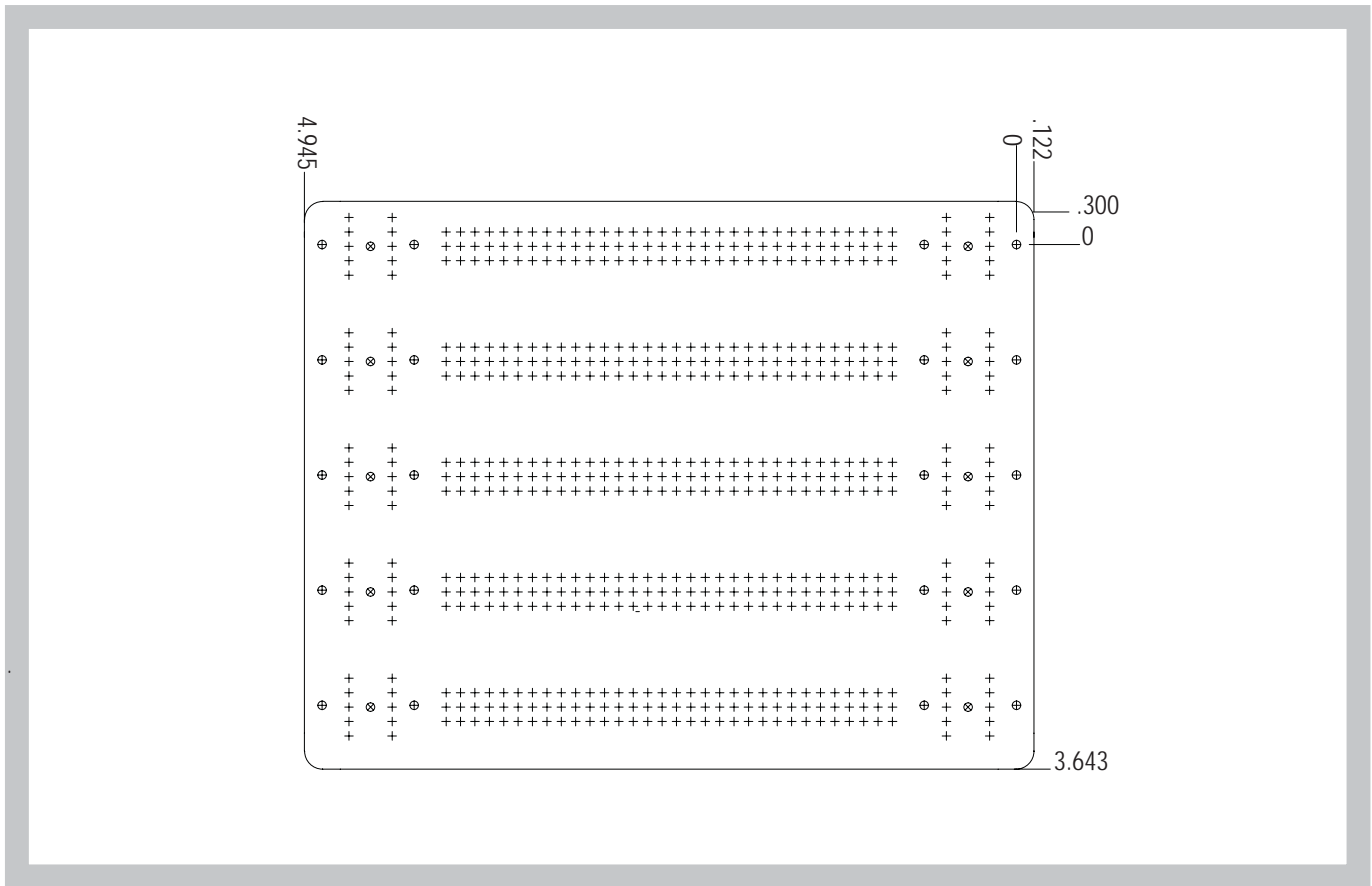
### DESCRIPTION

The J2 development backplane is an excellent model for prototyping. With all J2 pins undefined (except the B row), the J2 backplane allows flexibility for testing and designing your system.

All J2 B row power and ground pins connected per ANSI/VITA 1-1994 and IEEE P1014 specifications. The J2 backplane comes in 2-21 slot sizes and allows for an optional busbar set. The J3 development backplane is nearly identical to the J2 development backplane except that the A+C rows are bussed. All other pins on the J3 development backplane are used defined.

# J2, J3 DEVELOPMENT BACKPLANE

## LINE DRAWING



## ORDER INFORMATION

Slots	Width (in.)	Height (in.)	Part Number	
			J2 Development	J3 Development
2	1.500	5.067	101PNGJ202	101PNGJ302
3	2.300	5.067	101PNGJ203	101PNGJ303
4	3.100	5.067	101PNGJ204	101PNGJ304
5	3.900	5.067	101PNGJ205	101PNGJ305
6	4.700	5.067	101PNGJ206	101PNGJ306
7	5.500	5.067	101PNGJ207	101PNGJ307
8	6.300	5.067	101PNGJ208	101PNGJ308
9	7.100	5.067	101PNGJ209	101PNGJ309
10	7.900	5.067	101PNGJ210	101PNGJ310
11	8.700	5.067	101PNGJ211	101PNGJ311
12	9.500	5.067	101PNGJ212	101PNGJ312
13	10.300	5.067	101PNGJ213	101PNGJ313
14	11.100	5.067	101PNGJ214	101PNGJ314
15	11.900	5.067	101PNGJ215	101PNGJ315
16	12.700	5.067	101PNGJ216	101PNGJ316
17	13.500	5.067	101PNGJ217	101PNGJ317
18	14.300	5.067	101PNGJ218	101PNGJ318
19	15.100	5.067	101PNGJ219	101PNGJ319
20	15.900	5.067	101PNGJ220	101PNGJ320
21	16.700	5.067	101PNGJ221	101PNGJ321