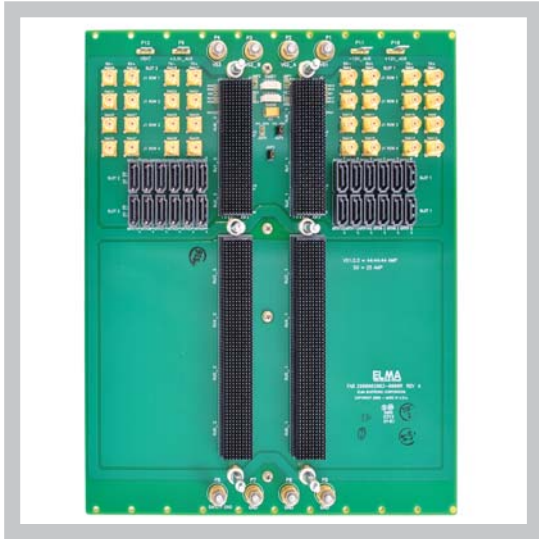


VPX TEST BACKPLANE



FEATURES

- For convenient testing of VPX boards
- Designed to the latest VITA 46.0 VPX specifications
- Accepts 6U cards, 3U is supported by use of a shelf divider
- Wider slot pitch allows more space for attaching to probes
- J1 "A" channel broken out to sixteen SMA connectors for each slot (32 total)
- J1 "B", "C", and "D" channels are each broken out to four SATA II cable headers for a total of 12 headers per slot (24 total)
- Allows simultaneous access of J1 fabric signals with standard VPX RTM module for J2-J6 signals
- More than two VPX modules may be interconnected by using additional 2-slot test backplanes

BOARD SPECIFICATIONS

- 10-layer stripline design
- 2 oz. power and ground
- PCB FR-4 or equivalent
- PCB .160" thick

MECHANICAL SPECIFICATIONS

- 6U height
- 2-slots
- 10.317 x 8.33 inches
- MultiGig RT-2 connectors

DESCRIPTION

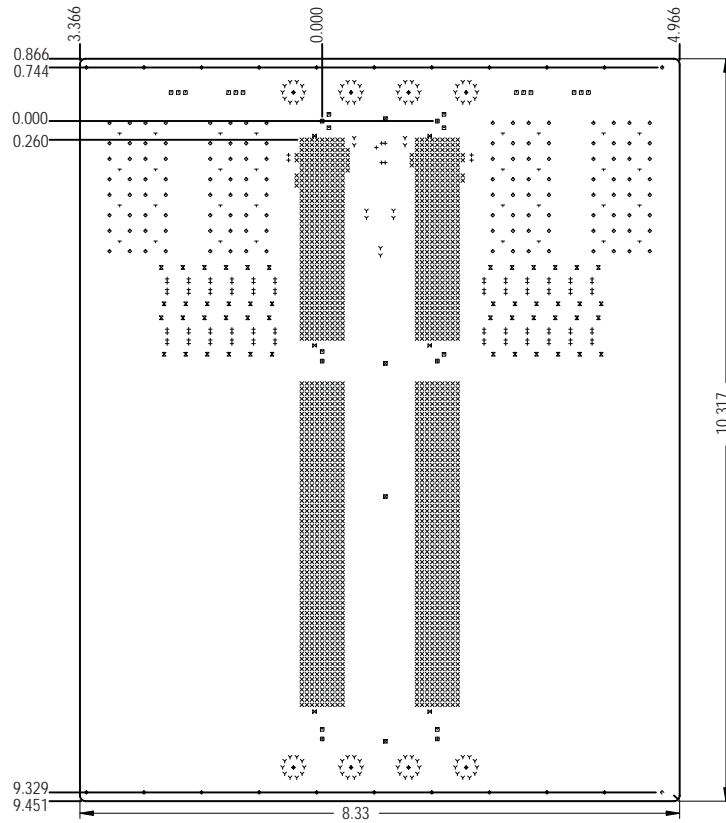
The Elma Bustronic 2-slot test backplane is a unique tool that lets VPX card developers and system integrators test VPX boards. The device allows the user to power up test their J1 fabric connections as they would be interconnected in the target application. Signals can be passed from one slot to the next via high speed interconnecting cables, via signals introduced through the J1 fabric connector, or accessed on the J1 fabric connector using the test backplane's SMA and SATA cable headers.

Additional 2-slot Test Backplanes can be used in a larger chassis to interconnect the J1 primary fabric in any serial topology desired. The A channel input using SMA cables accepts up to 10 Gbps and the B, C, and D channel inputs using the SATA II connectors accept up to 3.125 Gbps. There are 8 power studs for VS1, VS2_A, VS2_B, VS3, and 4 GND as well as fastons for 3.3V, +/- 12V, and VBAT. There are also two 5-pin IPMB headers for SMB-0 and SMB-1.

The Bustronic 2-slot VPX Test Backplane solves a signal access issue with VPX systems that utilize RTM boards. VPX cards are usually developed together with an RTM module that does not access the J1 fabric signals. In conventional designs, an engineer cannot probe these J1 fabric signals while using the DUT's RTM module to access other IO signals. The Bustronic solution allows the primary J1 fabric signals to be accessed/connected without interfering with the use of an existing RTM module designed for J2-J6 IO connector signals. Further, custom backplanes are often required to interconnect the primary fabric signals between multiple VPX blades for a specific application. The VPX Test Backplane allows the user to interconnect two or more such blades before investing the time or expense of a custom VPX backplane.

VPX TEST BACKPLANE

LINE DRAWING



ORDER INFORMATION

Height	Total Slots	Part Number
6U	2	1900002083-0000R

Related Products from Elma:

- System Platforms – need a chassis for your backplane?
- VPX Embedded Computing Products – SBCs, Switches, Storage, and More



Did you know we also offer with this VPX backplane:

- VPX Extenders, load boards, RTMs, test modules